

PRELIMINARY CONSTRUCTION PLANS

FOR

JEFFERSON AD1

3300 WILSON ROAD , MADISON COUNTY, OH 43162

CLIENT

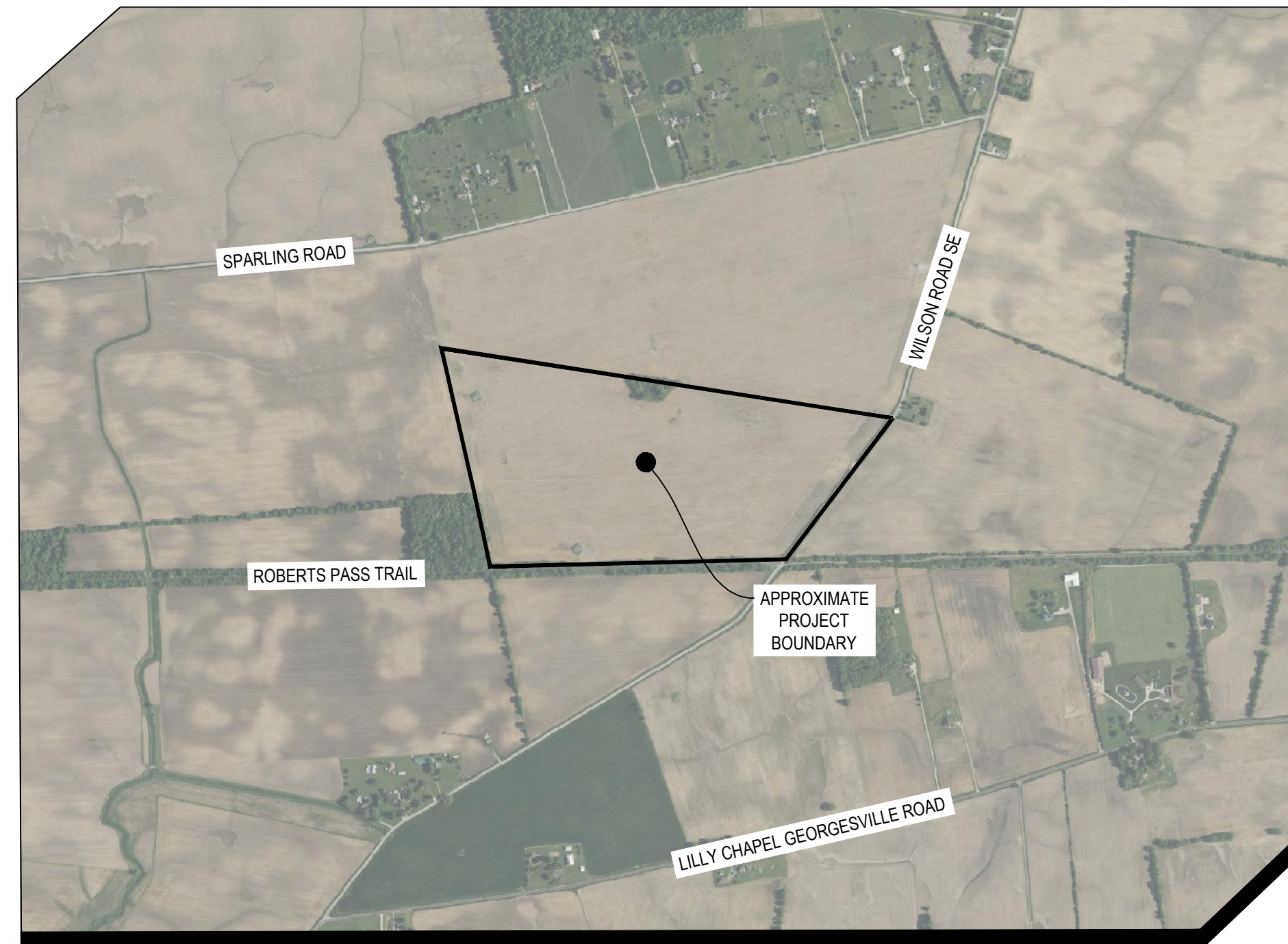


VANGUARD RENEWABLES
 15 WALNUT ST, SUITE 300
 WELLESLEY, MA, 02481
 (E) - DEVELOPMENT@VANGUARDRENEWABLES.COM
 (E) - BCOOPER@VANGUARDRENEWABLES.COM
 CONTACT: BEN COOPER

ENGINEER



STANTEC CONSULTING SERVICES, INC.
 1500 LAKE SHORE DR
 SUITE 100
 COLUMBUS, OH 43204
 (E) - JOHN.PENSHORN@STANTEC.COM
 CONTACT: JOHN PENSHORN, P.E.



VICINITY MAP

NOT TO SCALE



PROJECT LOCATION

TOWNSHIP: FAIRFIELD TOWNSHIP
 COUNTY: MADISON COUNTY

THIS PLANSET CONTAINS 22 SHEETS

SHEET INDEX	
SHEET NUMBER	SHEET TITLE
C-001	COVER SHEET
C-002	GENERAL NOTES
C-003	GENERAL NOTES
C-004	EXISTING CONDITIONS
C-005	REMOVALS AND PRECONSTRUCTION EROSION CONTROL PLAN
C-101	OVERALL SITE PLAN
C-102	ENLARGED SITE PLAN
C-103	ENLARGED SITE PLAN
C-201	OVERALL POST-CONSTRUCTION STABILIZATION PLAN
C-301	OVERALL GRADING PLAN
C-302	ENLARGED GRADING PLAN
C-303	ENLARGED GRADING PLAN
C-304	LAGOON HORIZONTAL PROFILE
C-305	LAGOON VERTICAL PROFILE
C-501	OVERALL STORM SEWER PLAN
C-502	ENLARGED STORM SEWER PLAN
C-503	ENLARGED STORM SEWER PLAN
C-801	DETAILS
C-802	DETAILS
C-803	DETAILS
C-804	DETAILS
C-805	DETAILS



1500 LAKE SHORE DRIVE
 SUITE 100
 COLUMBUS, OH 43204
 PHONE: 614-486-4383
 WWW.STANTEC.COM



CLIENT:

JEFFERSON AD1

3300 WILSON ROAD
 MADISON COUNTY, OH 43162

PROJECT TITLE

ISSUE NO.:

DESCRIPTION:

DATE:

CERTIFICATION:

I HEREBY CERTIFY THAT THIS PLAN SPECIFICATION OR REPORT WAS PREPARED BY ME OR UNDER MY DIRECT SUPERVISION AND THAT I AM A FULLY LICENSED PROFESSIONAL ENGINEER UNDER THE LAWS OF THE STATE OF MINNESOTA.

ISSUE NO.:

DATE:

PROJECT NO.:

DWN BY:

CHKD BY:

APP'D BY:

ISSUE DATE:

ISSUE NO.:

SHEET TITLE:

COVER SHEET

SHEET NO.:

C-001

